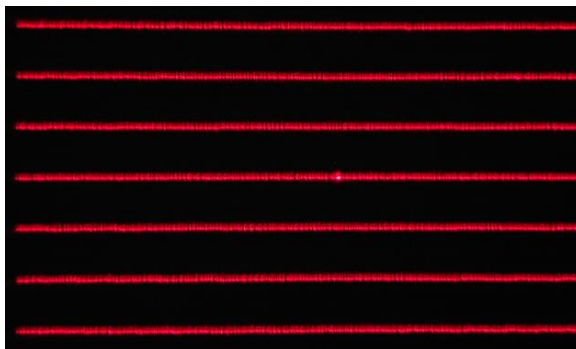
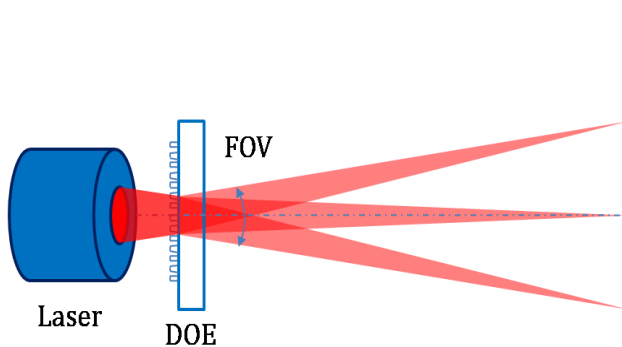


DTC-06 Diffractive Optical Element



- **Element Number: DTC-06**
- Description: 7 Parallel Lines
- Substrate material: PET/PMMA/GLASS
- DOE active area: 4 x 4 mm
- Design wavelength: 650 nm
- Minimum recommended beam diameter (FWHM): 2 mm

Pattern Specifications



A DOE functions with a laser light source that emits a diffractive pattern. Each DOE pattern is characterized by a specific laser wavelength, focal length and transverse mode. Each laser wavelength will result in a different zero order intensity. The focal length is dependent on the DOE and the object distance which can be adjusted using a collimating lens (CL). The transverse mode will affect the dot shape.

Field of View (FOV)	31.7°x15.4° (HxV)
Zero order	≤ 1%